

# CLOUDS

DRUM SET

NICKOLAS ASHFORD AND VALERIE SIMPSON  
ARR. BY LEEERAN Z. RAPHAELY

FUNK/DISCO ♩ = 120

Musical notation for the first staff, starting with a treble clef and a 4/4 time signature. It features a continuous eighth-note pattern across 10 measures, followed by a final measure with a triplet of eighth notes and an 'x' above the staff.

**A**

Musical notation for the first staff of section A, consisting of three measures of eighth notes with a slash through them, indicating a drum set pattern.

8

Musical notation for the second staff of section A, starting with a treble clef and a 4/4 time signature. It features a triplet of eighth notes followed by eighth notes with slashes, and ends with a triplet of eighth notes and an 'x' above the staff.

11

Musical notation for the third staff of section A, consisting of three measures of eighth notes with a slash through them, indicating a drum set pattern.

16

**B**

Musical notation for the first staff of section B, consisting of four measures of eighth notes with a slash through them, indicating a drum set pattern.

19

Musical notation for the second staff of section B, starting with a treble clef and a 4/4 time signature. It features eighth notes with slashes, followed by a quarter note, and ends with a quarter note and a slash.

23

**C**

Musical notation for the first staff of section C, starting with a treble clef and a 4/4 time signature. It features a continuous eighth-note pattern with a slash through them.

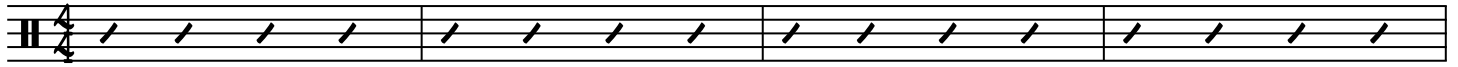
28

Musical notation for the second staff of section C, starting with a treble clef and a 4/4 time signature. It features eighth notes with slashes, followed by a quarter note and a slash.

33

2

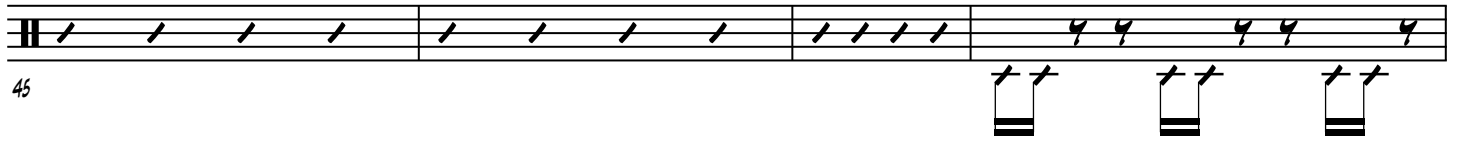
CLOUDS



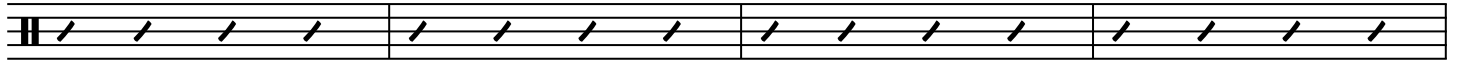
37



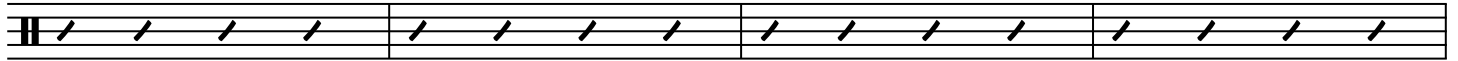
41



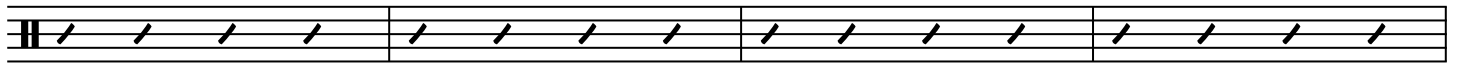
45



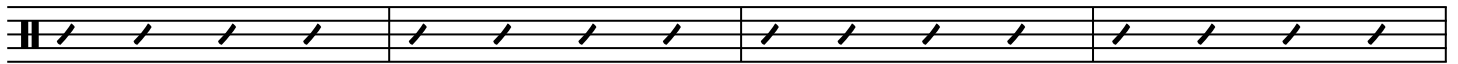
49



53



57



61



65