

PRINTING SONG

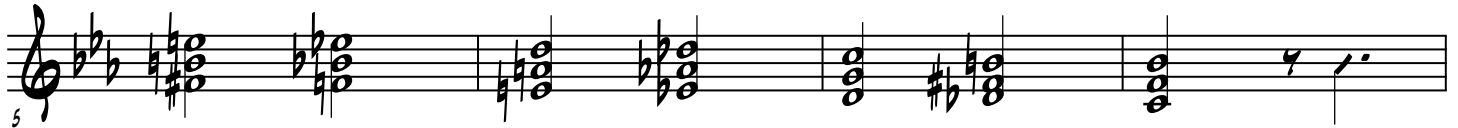
GITAR

LEERAN 2. RAPANELY

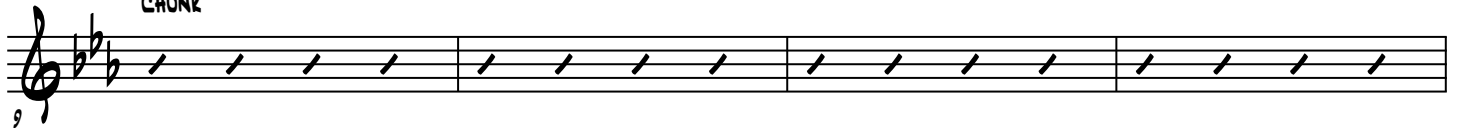
SHUFFLE ♩ = 210 (♩ = ♩³♩)



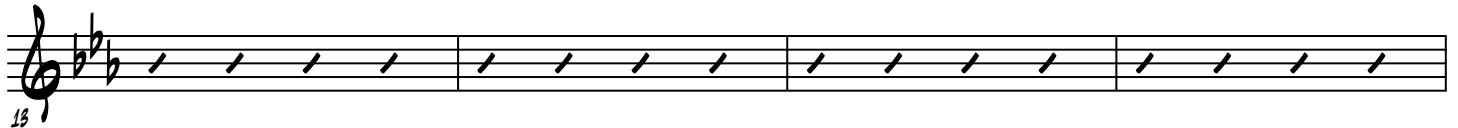
G7^{#9}/_{#5}



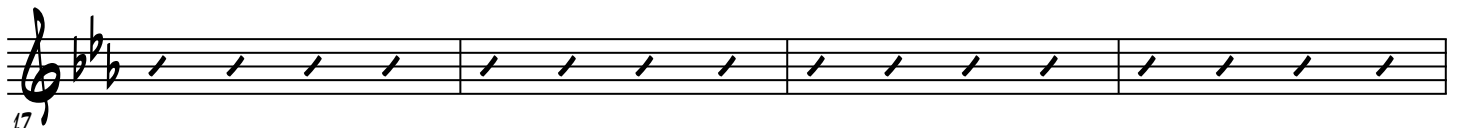
5
A C^{M7} F⁷ C^{M7} F⁷ F^{M7} B^{b7} E^{bM7} G⁷
 CHUNK



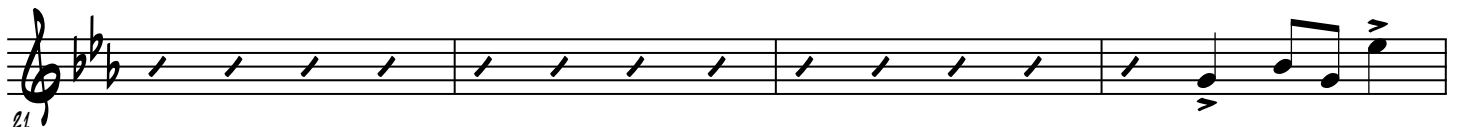
9
 C^{M7} F⁷ C^{M7} F⁷ F^{M7} B^{b7} E^{bM7} G⁷



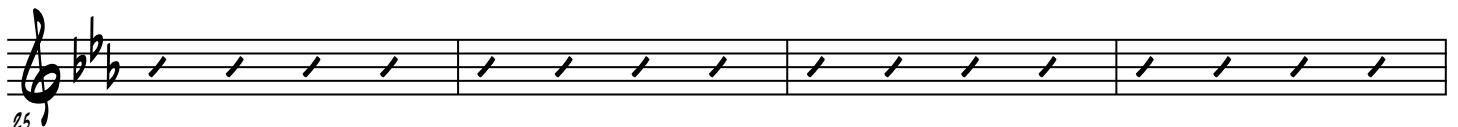
13
B C^M B^b/O^{Eb} E^o F^{M7} C^{M7}/B^b G^{/B} C^M B^b/O^{Eb} E^o F^{M7} C^{M7}/B^b G^{/B}



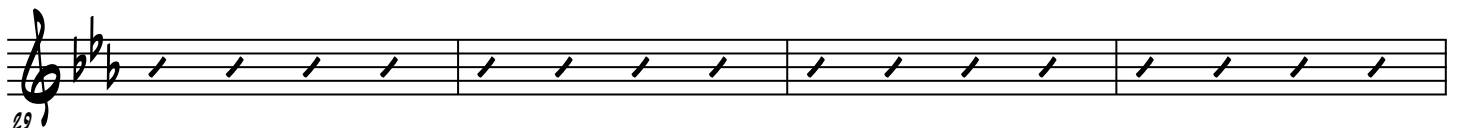
17
 C^M B^b/O^{Eb} E^o F^{M7} C^{M7}/B^b G^{/B} E^{bM7} G⁷ C^{M7}



21
C C^{M7} F⁷ C^{M7} F⁷ F^{M7} B^{b7} E^{bM7} G⁷



25
 C^{M7} F⁷ C^{M7} F⁷ F^{M7} B^{b7} E^{bM7} G⁷



29
 C^{M7} F⁷ C^{M7} F⁷ F^{M7} B^{b7} E^{bM7} G⁷

□ CM Bb/DEb E° FM7 CM7/Bb G/B CM Bb/DEb E° FM7 CM7/Bb

Musical staff with treble clef, key signature of three flats, and a repeat sign. Measure numbers 33-36 are indicated by slashes.

CM Bb/DEb E° FM7 CM7/Bb G/B EbM7 G7 CM7

Musical staff with treble clef, key signature of three flats, and a repeat sign. Measure numbers 37-40 are indicated by slashes.

□

Musical staff with treble clef, key signature of three flats, and a repeat sign. Measure numbers 41-44 are indicated by slashes.

G7#5

Musical staff with treble clef, key signature of three flats, and a repeat sign. Measure numbers 45-48 are indicated by slashes.

□ CM7 F7 CM7 F7 CM7 F7 CM7 Ab7 G7

Musical staff with treble clef, key signature of three flats, and a repeat sign. Measure numbers 49-52 are indicated by slashes.

CM7 F7 CM7 F7 CM7 F7 CM7 Ab7 G7 CM7 G7

Musical staff with treble clef, key signature of three flats, and a repeat sign. Measure numbers 53-56 are indicated by slashes.

CM7 F7 CM7 F7 FM7 Bb7 EbM7 G7

Musical staff with treble clef, key signature of three flats, and a repeat sign. Measure numbers 57-60 are indicated by slashes.

CM7 F7 CM7 F7 FM7 Bb7 EbM7 G7

Musical staff with treble clef, key signature of three flats, and a repeat sign. Measure numbers 61-64 are indicated by slashes.

PRINTING SONG

Cm Bb/D Eb E° Fm7 Cm7/Bb G/B Cm Bb/D Eb E° Fm7 Cm7/Bb G/B

66

Cm Bb/D Eb E° Fm7 Cm7/Bb G/B EbM7 G7 Cm7

70

G Cm7 F7 Cm7 F7 Fm7 Bb7 EbM7 G7

74

Cm7 F7 Cm7 F7 Fm7 Bb7 EbM7 G7

78

H Cm7 F7 Cm7 F7 Fm7 Bb7 EbM7 G7

82

Cm7 F7 Cm7 F7 Fm7 Bb7 EbM7 G7

86

Cm Bb/D Eb E° Fm7 Cm7/Bb G/B Cm Bb/D Eb E° Fm7 Cm7/Bb G/B

90

Cm Bb/D Eb E° Fm7 Cm7/Bb G/B EbM7 G7 Cm7

94