

SMARMY BALLAD

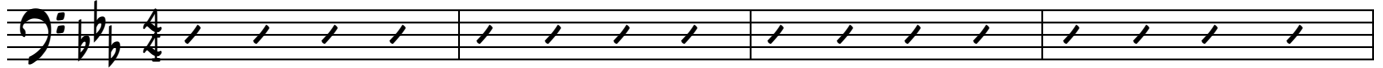
RHYTHM SECTION

♩ = 100

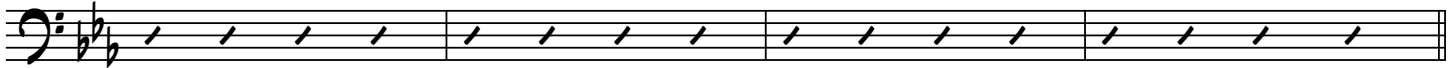
WRITTEN IN 25 MINUTES

LEERAN Z. RAPHAELY

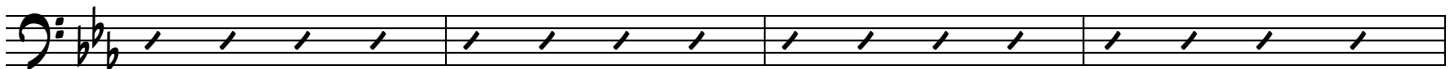
C^{M7} B^bM⁶ A^bM⁷ E^b/G F^{M7} A^bM⁷/B^b E^b G⁷



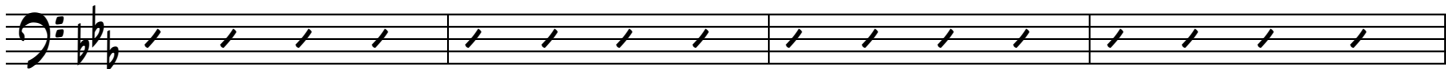
C^{M7} B^bM⁶ A^bM⁷ E^b/G F^{M7} C^{M7} A^bM⁷/B^b G⁷/B



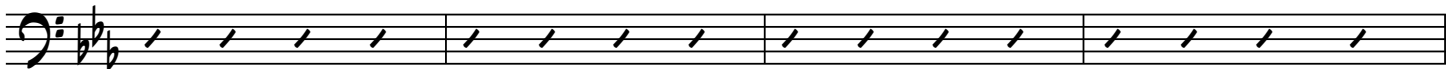
5 (A) C^{M7} B^bM⁶ A^bM⁷ E^b/G F^{M7} A^bM⁷/B^b E^b G⁷



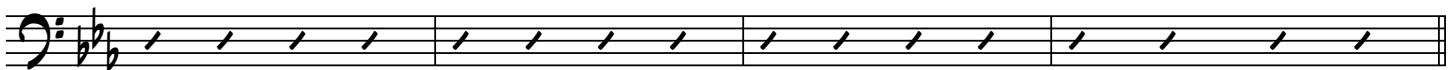
9 C^{M7} B^bM⁶ A^bM⁷ E^b/G F^{M7} C^{M7} A^bM⁷/B^b G⁷/B



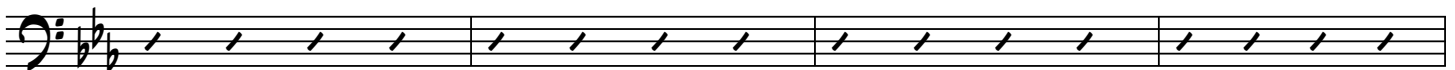
13 (B) C^{M7} B^bM⁶ A^bM⁷ E^b/G F^{M7} A^bM⁷/B^b E^b G⁷



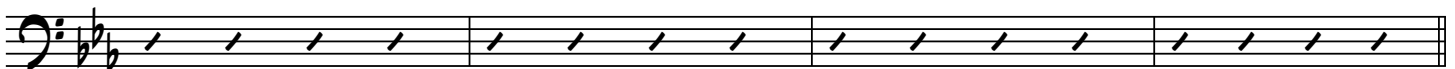
17 C^{M7} B^bM⁶ A^bM⁷ E^b/G F^{M7} C^{M7} A^bM⁷/B^b



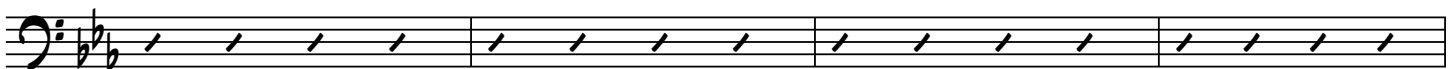
21 (C) A^bM⁷ B^bM⁷ A^b/C B^b/D A^bM⁷ G⁷ C^{M7}



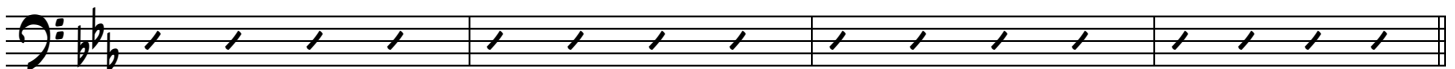
25 A^bM⁷ B^bM⁷ A^b/C B^b/D A^bM⁷ G⁷ C^{M7}



29 (D) A^bM⁷ B^bM⁷ A^b/C B^b/D A^bM⁷ G⁷ C^{M7}



33 A^bM⁷ B^bM⁷ A^b/C B^b/D A^bM⁷ G⁷ C^{M7}



37

2

SMARMY BALLAD - RHYTHM SECTION

[E] VAMP C M7 Bb M6 Ab M7 Eb/G F M7 Ab M7/Bb Eb G7

Musical staff with bass clef, key signature of two flats, and a repeat sign at the beginning.

41

C M7 Bb M6 Ab M7 Eb/G F M7 C M7 Ab M7/Bb G7/B

Musical staff with bass clef, key signature of two flats, and a repeat sign at the end.

45

[G] C M7 Bb M6 Ab M7 Eb/G F M7 Ab M7/Bb Eb G7

Musical staff with bass clef, key signature of two flats, and a repeat sign at the beginning.

49

C M7 Bb M6 Ab M7 Eb/G F M7 C M7 Ab M7/Bb G7/B

Musical staff with bass clef, key signature of two flats, and a repeat sign at the beginning.

53

[H] C M7 Bb M6 Ab M7 Eb/G F M7 Ab M7/Bb Eb G7

Musical staff with bass clef, key signature of two flats, and a repeat sign at the beginning.

57

C M7 Bb M6 Ab M7 Eb/G F M7 C M7 Ab M7/Bb

Musical staff with bass clef, key signature of two flats, and a repeat sign at the beginning.

61

[I] Ab M7 Bb M7 Ab/C Bb/D Ab M7 G7 C M7

Musical staff with bass clef, key signature of two flats, and a repeat sign at the beginning.

65

Ab M7 Bb M7 Ab/C Bb/D Ab M7 G7 C M7

Musical staff with bass clef, key signature of two flats, and a repeat sign at the beginning.

69

[J] Ab M7 Bb M7 Ab/C Bb/D Ab M7 G7 C M7

Musical staff with bass clef, key signature of two flats, and a repeat sign at the beginning.

73

Ab M7 Bb M7 Ab/C Bb/D Ab M7 G7 C M7

Musical staff with bass clef, key signature of two flats, and a repeat sign at the end.

77